

**HEADQUARTERS
PHILIPPINE ARMY
OFFICE OF THE ARMY CHIEF QUARTERMASTER
Fort Andres Bonifacio, Metro Manila**

PA SPECIFICATION

QM SPEC NR IC-21PAASB

16 SEP 2022

Interim

PHILIPPINE ARMY ATHLETIC SHOES, BLACK

1. GENERAL

1.1. Scope – This document covers the requirements for the type of rubber shoes for use of military personnel of the Philippine Army.

1.2. Grade – The finished athletic rubber shoes shall be of the grade and quality of product as prescribed by this specification.

1.3. Colorway – The color of the finished athletic rubber shoes shall be Tri-black or combination of different shades of black. The color scheme shall be a tri-black color design consisting of black colored uppers and laces, black colored midsoles and black colored outsoles.

1.4. Size – The sizes of the rubber shoes shall be as specified in TABLE I, but the ordering of the tariff sizes shall be determined by the contract.

TABLE I SIZES

Shoe Size	Insole Length (mm)	Insole Width (mm)	Vamp Width (mm)
4.5	251 (+3)	82 (minimum)	148 (minimum)
5	255 (+3)	85 (minimum)	151 (minimum)
5.5	258 (+ 3)	88 (minimum)	154 (minimum)
6	260 (+ 3)	89 (minimum)	157 (minimum)
6.5	264 (+ 3)	90 (minimum)	160 (minimum)
7	270 (+ 3)	91 (minimum)	163 (minimum)
7.5	274 (+ 3)	92 (minimum)	169 (minimum)
8	277 (+ 3)	93 (minimum)	172 (minimum)
8.5	282 (+ 3)	94 (minimum)	175 (minimum)
9	287 (+ 3)	95 (minimum)	178 (minimum)
9.5	292 (+ 3)	96 (minimum)	181 (minimum)
10	296 (+ 3)	97 (minimum)	184 (minimum)
10.5	299 (+ 3)	97 (minimum)	187 (minimum)
11	302 (+ 3)	98 (minimum)	190 (minimum)
11.5	305 (+ 3)	98 (minimum)	193 (minimum)
12	308 (+ 3)	98 (minimum)	196 (minimum)
12.5	311 (+ 3)	99 (minimum)	199 (minimum)
13	314 (+ 3)	99 (minimum)	202 (minimum)

PA SPECIFICATION

QM SPEC NR IC-21PAASB

16 SEP 2022

Interim

2. REQUIREMENTS

2.1. First Article – Two (2) samples of the finished athletic rubber shoes submitted to the Office of Army Chief Quartermaster shall be subjected to first article inspection in accordance with para 3.1.

2.2. Materials

2.2.1. Basic Materials - The vamp, quarter, side guard, outside collar, back counter and tongue shall be made of breathable, durable mesh fabric or synthetic materials. The mesh fabric shall be one or more layered laminated material. Shall have a minimum Bursting Strength of 20 kg/cm²

2.2.2. Tongue Lining and Inside Collar - shall be made of three- layered laminated material with a bursting strength of not less than 20 kg/cm².

2.2.3. Back Counter – The back counter shall be manufacturer's standard; black in color and shall have a reflective material designed to help runners stay visible at night.

2.2.4. Eyeletstay Reinforcement – Shall have an eyeletstay reinforcement made from synthetic material with a breaking strength of not less than 140 kg.

2.2.5. Eyeletstay Lining – The eyeletstay lining shall be made from synthetic material with a thickness of not more than 1mm.

2.2.6. Toe Cap Reinforcement – The toe cap reinforcement shall be made of cotton/polyester/nylon material with a breaking strength of not less than 115 kgs.

2.2.7. Tongue and Inside Collar Foam – The tongue foam shall be not less than 3mm to 6mm thickness. The inside collar foam shall be 7mm to 11mm.

2.2.8. Counter – The counter shall be made of pre-formed plastic or thermoplastic sheet with a thickness of 1 mm to 2 mm.

2.2.9. Insole – The insole material shall be made of three layers of either nylon, polyester or olefin material with foam, with a breaking strength of not less than 150 kg.

2.2.10. Footbed Cushion or Sock Lining – The footbed cushion or sock lining shall be made of Ethylene-Vinyl Acetate/Rubber laminated with fabric, black in color, with a minimum thickness of 4mm – 8mm. The size of footbed cushion or sock lining shall properly fit to the applicable size of athletic shoes.

2.2.11. Midsole – The midsole shall be black compressed and molded material or materials. The midsole shall be based on manufacturer's standard.

PA SPECIFICATION

QM SPEC NR IC-21PAASB

16 SEP 2022

Interim

2.2.12. Outersole and Heel – The athletic rubber shoes outersole and heel shall be molded and shaped with traction design. It shall be made of high abrasive resistant and durable rubber. The traction design shall be manufacturer's standard. The outersole must be black. The outersole shall have the following general characteristics:

2.2.12.1. Abrasion resistance – The loss in weight due to abrasion resistance shall be not more than 70.00 milligrams.

2.2.12.2. Flex resistance – The athletic outersole and all the uppers shall not show sign of cracks or splits after a minimum of 250 hours continuous flexing.

2.2.12.3. Bond strength – The bond strength shall be 60.0 kg (minimum).

2.2.12.4. Hardness – The durometer hardness shall be 60 ± 10 Shore A.

2.2.12.5. Rubber Composition – The rubber outsole shall be rubber compound to be determined through TG-FTIR Analysis.

2.2.13. Lace – The lace shall be black, oval or flat shape and made of either nylon, polyester or olefin woven cord, 5.0 to 8.0 mm wide and provided with 1.8 cm (minimum) long plastic reinforced tips. The length of each lace shall be 124 cm (minimum) and shall have a breaking strength of not less than 70.0 kg.

2.2.14. Thread, Upper Fitting – The thread for sewing shall be nylon or polyester, 4-ply (maximum), black in color, with a minimum breaking strength of 5.0 Kgs.

2.1.1 Thread, Insole Stitching – The Insole thread shall be made of nylon or polyester, 4 ply (maximum), white/natural in color with a breaking strength of not less than 20.0 Kgs.

2.2 Construction

2.3.1 The athletic shoes shall be low-cut, constructed using the latest technology of the manufacturer.

2.3.2 Eyeletting – There shall be minimum of six (6) eyelet holes on each eyelet stay spaced evenly from blucher nose to side reinforcement.

2.3.3 Reinforcements / Decorative Design – The athletic rubber shoes must have the manufacturer's reinforcements / design, on the vamp/ quarter/ counter, sewed/stamped/laminated/printed on the shoes. The materials of the design may be Synthetic Leather/ Thermoplastic/ Rubber/ Plastic/ Polyurethane Leather or any synthetic materials.

PA SPECIFICATION

QM SPEC NR IC-21PAASB

16 SEP 2022

Interim

2.3.4 Tongue Label – The label shall be sewed or laminated on the inside portion of the tongue. The contents of label shall be imprinted or stenciled on a cloth with indelible ink or by heat transfer of equal fastness. The label must contain the size of the athletic shoes.

2.3.5 Brand/Manufacturers Marking/Logo – The rubber shoes must have a brand/manufacturers logo.

2.4 Workmanship

2.4.1 Design – The design of the finished athletic shoes shall be low-cut. The athletic shoes shall be a full lace closure and black mesh vamp, quarter, side guard, outside collar, back counter and tongue. The other parts is made of black synthetic material. The bottom part consists of black midsole and black outsole with traction design

2.4.2 Finish – The athletic shoes shall be clean, well finished and free from any defects or blemishes, which may affect its appearance or serviceability. Overall workmanship shall be the best known to the trade. Poor quality of sewing and workmanship shall be sufficient ground for rejection of the finished article.

3 VERIFICATION

3.1 First Article Inspection – The contractor shall furnish two (2) samples of the athletic shoes for first article inspection and approval as against the bid sample. The sample shall be subjected to tests and examination to verify if the requirements in para 2.2 through 2.3 are satisfied, with referenced to the attached test parameters and classification of defects of this document.

3.2 Sampling

3.2.1 Samples of materials, components and other items entering into the manufacture of the athletic shoes may be taken at random from time to time by PA inspectors for the purpose of examination and test to determine compliance with the requirements of this specification.

3.2.2 Pre-production Sample – Before actual production starts, unless otherwise specified, two (2) pairs finished samples of the athletic shoes shall be submitted to the RDC, ASCOM, PA for verification whether the quality of the materials used conformed with the characteristics/requirements of the specification and (1) pair finished athletic shoes to the Office of Army Quartermaster for approval as to design, construction, workmanship, style and finish.

PA SPECIFICATION

QM SPEC NR IC-21PAASB

16 SEP 2022

Interim

4. QUALITY ASSURANCE PROVISIONS

Responsibility of Inspection – Unless otherwise specified in the contract or purchase order, the contractor is responsible for the performance of all inspection requirements as specified herein. Except as otherwise specified in the contract or purchase order, the contractor may use his own or any other facilities suitable for the performance of inspection requirements specified herein, unless disapproved by the Government. The Government reserves the right to perform any of the inspections set forth in this document where such inspections are deemed necessary to assure supplies and services conform to prescribed requirements.

5. PACKAGING AND PACKING

5.1. Packaging – Each pair of athletic shoes should then be placed on an individual shoe box with onion skin wrapped around each shoe for protection. The box should have the manufacturer's logo printed on the box. It should be accompanied by label with the details of the shoe and its origin and other important matters.

5.2. Packing on Master Box – Twelve (12) pairs of athletic shoes in the shoe box of the same size shall be packed in a corrugated carton, in suitable size. The top cover, when closed, shall be sealed with a binding tape and finally secured with nylon straps. The box shall be labeled as follows:

PHILIPPINE ARMY ATHLETIC SHOES, BLACK
(Name of Contractor)
QTY: 12 pairs
SIZE: ____

6. NOTES

6.1. Any point not covered by this text shall be supported by the attached illustrations as point of reference and guide only in the measurement of sizes.

6.2. Re-Test - In the event that the inspecting committee finds reservations on the test results, the Procuring Entity reserves the right for a retest from any government accredited testing facility/laboratory.

6.2.1 Contractor/Supplier shall submit another two (2) pairs of rubber shoes to any government accredited testing facility/laboratory to be witnessed by representative/s of the Contractor/Supplier and the representative of the Procuring Entity to determine that the test methods and evaluations are being executed in the same manner as stipulated in this specification.

PA SPECIFICATION

QM SPEC NR IC-21PAASB


16 SEP 2022


Interim

6.3. Testing Fees – All costs for testing/re-test and other incidental expenses relative to ensure compliance to this project shall be shouldered by the Contractor/Supplier.


Prepared by:

Recommended by:


GENERAL C CONTILLO
Major (QMS) PA
Plans and Research Branch


DEXTER A MACASAET
Colonel MNSA (QMS) PA
Chief

Approved by:


ROMEO S BRAWNER JR
Lieutenant General, PA
Commanding General, PA

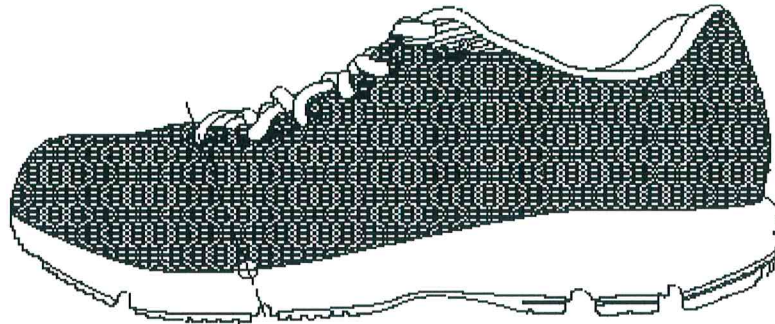
PA SPECIFICATION

QM SPEC NR IC-21PAASB

16 SEP 2022

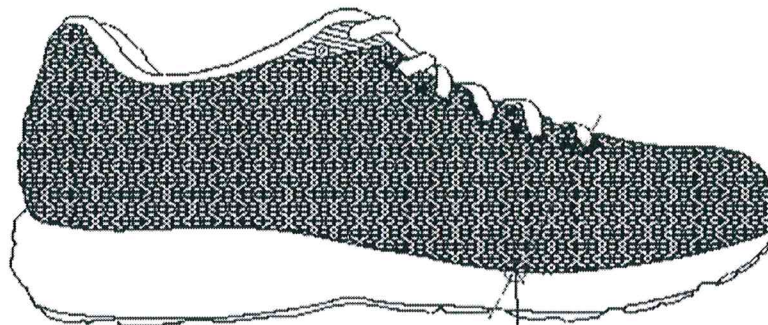
Interim

PHILIPPINE ARMY ATHLETIC SHOES, BLACK



PT. A

NOTE : PICTURE OR DRAWING MAY
VARY BASED ON ACTUAL DESIGN



PT. B

NOTE: PICTURE OR DRAWING MAY
VARY BASED ON ACTUAL DESIGN

6W

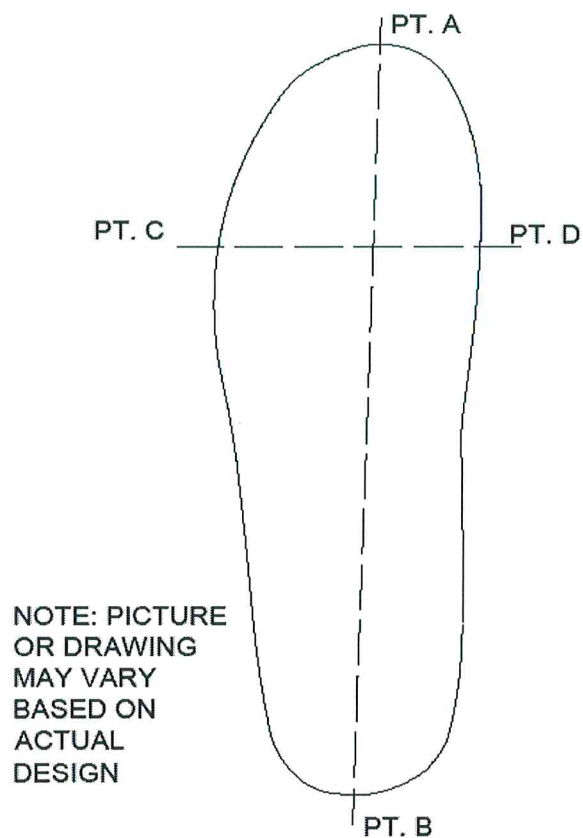
9

PA SPECIFICATION

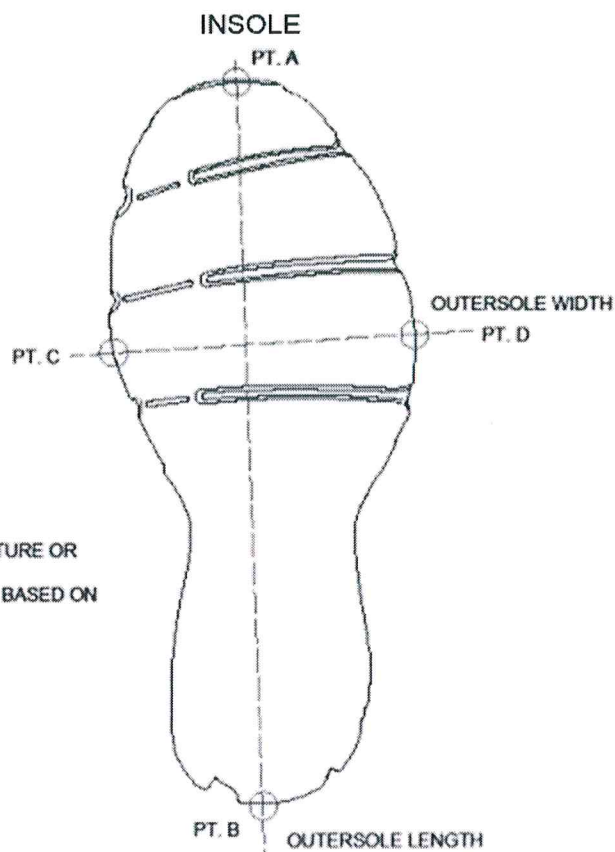
QM SPEC NR IC-21PAASB

16 SEP 2022

Interim



NOTE: PICTURE OR DRAWING MAY VARY BASED ON ACTUAL DESIGN



NOTE: PICTURE OR DRAWING MAY VARY BASED ON ACTUAL DESIGN

OUTSOLE VIEW

**HEADQUARTERS
PHILIPPINE ARMY
OFFICE OF THE ARMY CHIEF QUARTERMASTER
Fort Andres Bonifacio, Metro Manila**

TEST PARAMETERS

NOV 21 2022

PHILIPPINE ARMY ATHLETIC SHOES, BLACK

TEST PARAMETERS	QM SPEC NR IC-21PAASB Dated 16 September 2022	Classification of Defects	
		Major	Minor
Sizes & Measurement, mm	Size: _____		
Insole Length		X	
Insole Width		X	
Vamp Width		X	
Vamp, Quarter, Side Guard, Outside Collar, Back Counter And Tongue	Shall be made of one or more layered breathable, durable mesh fabric or synthetic materials		X
Colorway	The color scheme shall be a tri-black color design consisting of black colored uppers and laces, black colored midsoles and black colored outsoles	X	
Bursting Strength (kg/cm ²)	20 (minimum)	X	
Tongue Lining and Inside Collar	Shall be made of three-layered laminated material		X
Bursting Strength, kg/cm ²	20 (minimum)	X	
Back Counter	Shall be manufacturer's standard		X
Color	Black	X	
	shall have a reflective material to stay visible at night	X	
Eyeletstay Reinforcement	Shall have an eyeletstay reinforcement made from synthetic material		X
Breaking Strength, Kg	140 (minimum)	X	
Toe Cap Reinforcement	Shall be made of cotton/polyester/nylon material	X	
Breaking Strength, Kg	115 kgs (minimum)	X	
Tongue Foam thickness, mm	3 mm to 6 mm		X
Inside Collar Foam thickness, mm	7 mm to 11 mm		X
Counter	Pre-formed Plastic / Thermoplastic Sheet	X	
Thickness, mm	1 - 2		X
Insole	Shall be made of three layers of either nylon, polyester or olefin material with foam		X
Breaking Strength, kg	150 (minimum)	X	
Footbed Cushion or Sock Lining	Shall be Ethylene-Vinyl Acetate/Rubber laminated with fabric	X	
Color	Black	X	
Thickness, mm	4.0 - 8.0		X
Midsole	Shall be black compressed and molded material or materials	X	
	Shall be based on manufacturer's standard		X

Honor. Patriotism. Duty



GW

g

NOV 21 2022

TEST PARAMETERS	QM SPEC NR IC-21PAASB Dated 16 September 2022	Classification of Defects	
		Major	Minor
Outersole and Heel	Shall be molded and shaped with traction design	X	
	Shall be made of high abrasive resistant and durable rubber	X	
Traction design	Shall be manufacturer's standard		X
Color	Black	X	
Abrasion Resistance	The loss in weight due to abrasion resistance shall be not more than 70.00 milligrams	X	
Flex resistance	The rubber outersole and all the uppers shall not show sign of cracks or splits after a minimum of 250 hours continuous flexing.	X	
Bond strength	60.0 kg (minimum)	X	
Hardness	The durometer hardness shall be 60 ± 10 Shore A.	X	
Rubber Composition	Shall be rubber compound to be determined through TG-FTIR Analysis	X	
Lace	Shall be oval or flat shape and made of either nylon, polyester or olefin woven cord		X
Color	Black	X	
Width, mm	5.0 - 8.0		X
Plastic reinforced tips	Provided with Plastic reinforced tips	X	
	1.8 (minimum) long		X
Breaking Strength, kg	70 (minimum)	X	
Length, cm	124 (minimum)		X
Thread, Upper Fitting	Shall be nylon or polyester		X
No. of Ply	4-ply (maximum)		X
Color	Black		X
Breaking Strength, kg	5 (minimum)	X	
Thread, Insole Stitching	Shall be made of nylon or polyester		X
No. of Ply	4 ply (maximum)		X
Color	White / natural		X
Breaking Strength, kg	20 (minimum)	X	
Eyeletting	shall be minimum of six (6) eyelet holes on each eyelet stay spaced evenly from blucher nose to side reinforcement	X	
Reinforcements / Decorative Design	Must have the manufacturer's reinforcements / design, on the vamp/ quarter/ counter, sewed/stamped/laminated/printed on the shoes		X
Material	Synthetic Leather/ Thermoplastic/ Rubber/ Plastic/ Polyurethane Leather or any synthetic materials		X
Tongue Label	Shall be sewed or laminated on the inside top center portion of the tongue		X
	The contents of label shall be imprinted or stenciled on a cloth with indelible ink or by heat transfer of equal fastness	X	
	The label must contain the size of the athletic shoes	X	
Brand/Manufacturers Marking/Logo	The rubber shoes must have a brand/manufacturers logo	X	

Honor. Patriotism. Duty



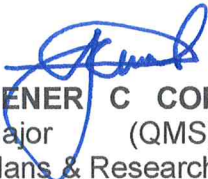
6w

f

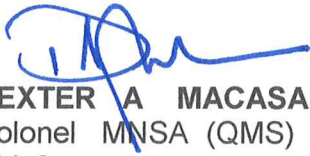
NOV 21 2022

TEST PARAMETERS	QM SPEC NR IC-21PAASB Dated 16 September 2022	Classification of Defects	
		Major	Minor
Workmanship			
Design	The design of the finished rubber shoes shall be low-cut	X	
	Shall be a full lace closure and black mesh vamp, quarter, side guard, outside collar, back counter and tongue	X	
Total Test Points		35	24

Prepared by:


GENER C CONTILLO
Major (QMS) PA
Plans & Research Branch

Recommended by:


DEXTER A MACASAET
Colonel MNSA (QMS) PA
Chief

Honor. Patriotism. Duty



NOV 21 2022

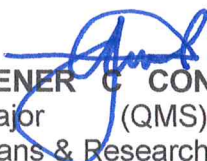
HEADQUARTERS
PHILIPPINE ARMY
OFFICE OF THE ARMY QUARTERMASTER
Fort Andres Bonifacio, Metro Manila

PHILIPPINE ARMY ATHLETIC SHOES, BLACK
QM SPEC NR IC-21PAASB dtd 19 September 2022

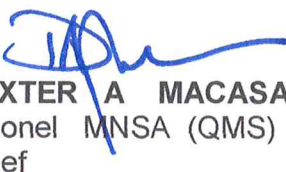
VISUAL INSPECTION CHECKLIST

DESCRIPTION OF DEFECTS	CLASIFICATION OF DEFECTS
1. Packaging and Packing	
a. Each pair of rubber shoes shall be placed on an individual shoe box with onion skin wrapped around each shoes for protection	Major
b. The box should have the manufacturer's/Brand logo printed on the top	Minor
c. The box label shall have the details such as size and other important matters	Major
d. The actual shoe size shall be the same from the box label	Major
e. Twelve (12) pairs of rubber shoes in the shoe box of the same size shall be packed in a corrugated carton	Major
f. Contents of the master box label shall be as specified	Major
2. Shall be black in color	
a. Upper	Major
b. Midsole	Major
c. Laces	Major
d. Outersole and Heel	Major
e. Thread	Major
3. Each pair shall be properly matched	Major
4. Each pair of Athletic shoes shall have no crooked box toes	Major
5. Each pair of athletic shoes shall have no Improper Vulcanization	Major
6. Presence of stains, foreign matter and other defects	
a. Affecting appearance	Major
b. Does not affect appearance	Minor
7. Any component part missing	
a. Brand Logo	Major
b. Size Label	Major
d. Footbed Cushion/Sock Lining	Major
e. Lace	Major
8. The design of the athletic shoes shall be the low cut, full lace closure and black mesh vamp, quarter, side guard, outside collar, back counter and tongue. The other parts is made of black synthetic material. The bottom consist of black midsole and black outersole with traction design	Major

Prepared by:


GENERAL C. CONTILLO
Major (QMS) PA
Plans & Research Branch

Recommended by:


DEXTER A. MACASAET
Colonel MNSA (QMS) PA
Chief

NOV 21 2022

**HEADQUARTERS
PHILIPPINE ARMY
OFFICE OF THE ARMY CHIEF QUARTERMASTER
Fort Andres Bonifacio, Metro Manila**

**PHILIPPINE ARMY ATHLETIC SHOES, BLACK
QM SPEC NR IC-21PAASB dtd 16 September 2022**

LIST OF REQUIRED PROTOTYPE SAMPLES AND SWATCH MATERIALS FOR TESTING

1. FOR POST QUALIFICATION TEST

PROTOTYPE SAMPLES

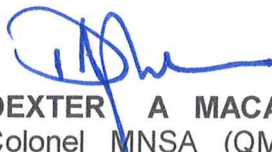
sizes
RDC - Three (3) pairs, any size but the Four (4) pairs must be of same
OAQM - One (1) pair

SWATCH MATERIALS (Minimum requirement)

Vamp, Quarter, Side Guard, Outside Collar, Back Counter And Tongue	50 cm x 50 cm
Tongue Lining and Inside Collar	50 cm x 50 cm
Eyeletstay Reinforcement	40 cm x 40 cm
Toe Cap Reinforcement	50 cm x 50 cm
Tongue Foam	20 cm x 20 cm
Inside Collar Foam	20 cm x 20 cm
Counter	20 cm x 20 cm / one (1) pair
Insole	50 cm x 50 cm
Thread for Upper Fitting	10 meters
Thread for Insole Stitching	10 meters

2. FOR ACCEPTANCE TEST

Five (5) pairs - Picked at random from delivery
- One (1) pair for each size (size 5 to 13) for dimensional test (to be returned after conduct of test)
- RDC - Three (3) samples for RDC test
- Other testing facility - one (1) for TG- PTR analysis
- OACQM – One (1)


DEXTER A MACASAET
Colonel MNSA (QMS) PA
Chief